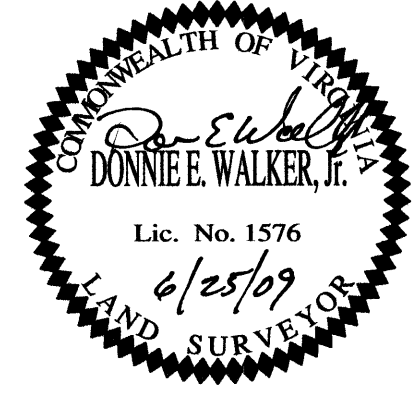


VICINITY MAP

SYMBOL LEGEND

	RAIL
	NONMONUMENTED POINT
	PIPE
	TREE (SEE DESCRIPTION)
	IRON PIN PLACED - NIS
	SQUARE ROD

I, DONNIE E. WALKER, JR., LAND SURVEYOR, CERTIFY THAT THIS MAP WAS DRAWN FROM AN ACTUAL FIELD SURVEY PERFORMED UNDER MY DIRECT SUPERVISION AND THAT THE ERROR OF CLOSURE EXCEEDS 1 PART IN 10,000.



NOW OR FORMERLY
FLASHOVER INVESTMENTS, LLC
DB 773-PG 405
PC 2, SLIDE 2061-PG 2
TAX MAP 31-A-64

NOW OR FORMERLY
GLENN THOMPSON
SHARON THOMPSON
DB 403-PG 80
TAX MAP 30-A-46

NOW OR FORMERLY
APPALACHIAN POWER COMPANY
DB 26-PG 472
TAX MAP 30-A-45

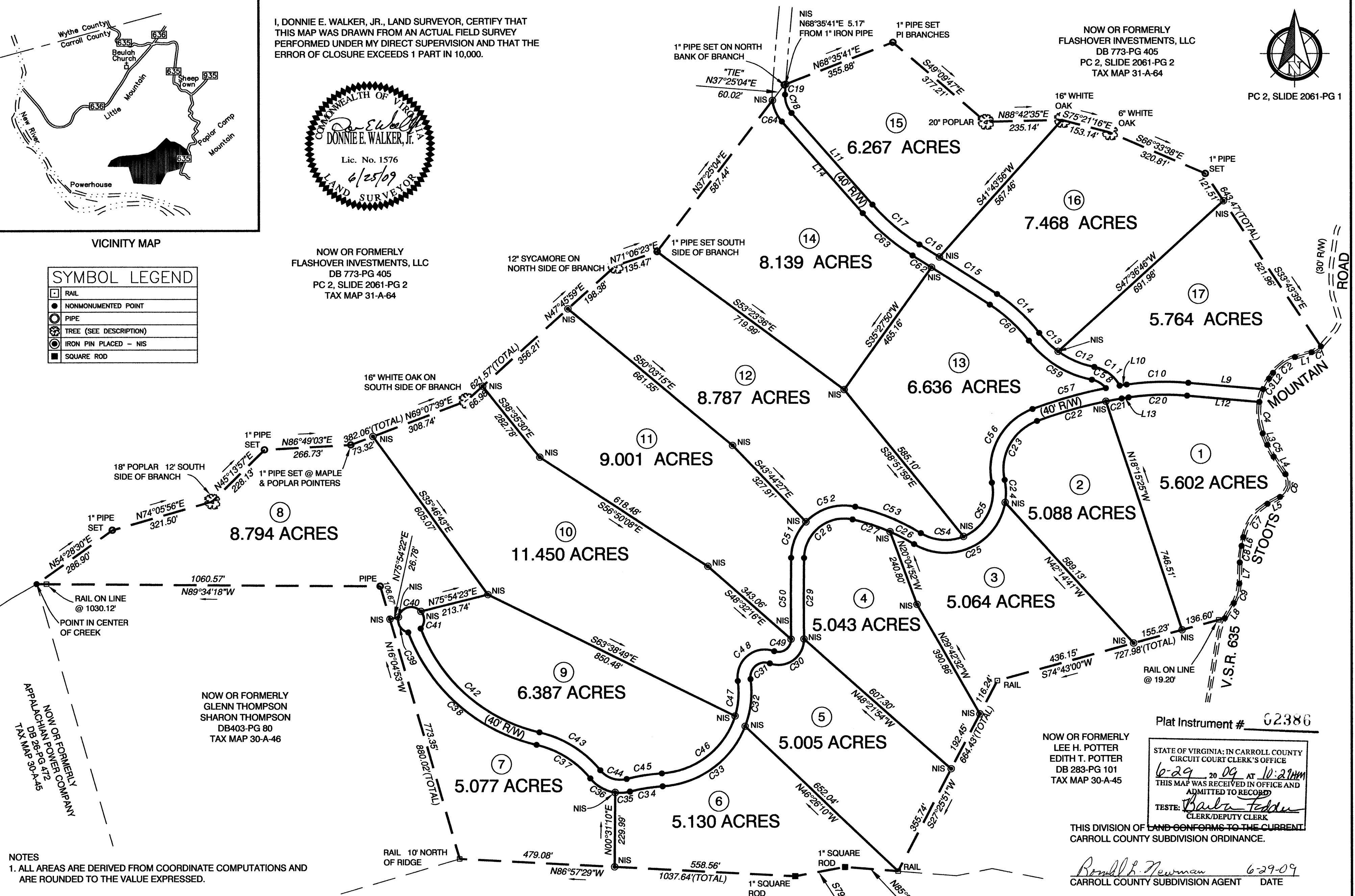
NOW OR FORMERLY
LEE H. POTTER
EDITH T. POTTER
DB 283-PG 101
TAX MAP 30-A-45

STATE OF VIRGINIA; IN CARROLL COUNTY
CIRCUIT COURT CLERK'S OFFICE
6-29-09 AT 10:21 AM
THIS MAP WAS RECEIVED IN OFFICE AND
ADMITTED TO RECORD
TESTE: *Barbara Fedden*
CLERK/DEPUTY CLERK

THIS DIVISION OF LAND CONFORMS TO THE CURRENT
CARROLL COUNTY SUBDIVISION ORDINANCE.

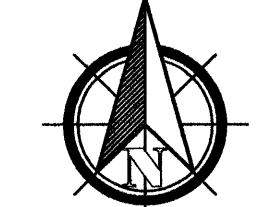
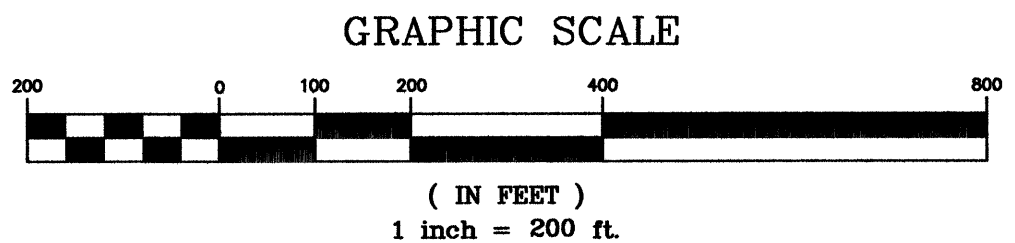
Ronald H. Newman 6-29-09
CARROLL COUNTY SUBDIVISION AGENT DATE

SOURCE OF TITLE
BEING A PORTION OF THE SAME PROPERTY CONVEYED TO
CREEKWOOD LAND COMPANY, LLC. BY ROBERT G. MELTON AND
ARTHUR K. DAVIS IN DEED BOOK 773 PAGE 402, DATED MAY 2, 2006.
A PORTION OF AX ID 31-A-64

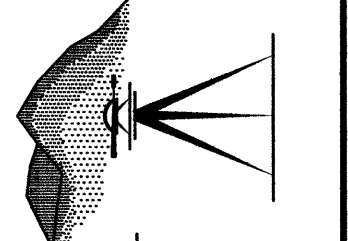


- NOTES**
1. ALL AREAS ARE DERIVED FROM COORDINATE COMPUTATIONS AND ARE ROUNDED TO THE VALUE EXPRESSED.
 2. THIS PROPERTY IS SUBJECT TO ANY RIGHTS-OF-WAY, EASEMENTS OF RECORD, OR RESTRICTIVE COVENANTS.
 3. THIS SURVEY DOES NOT CERTIFY LEGAL TITLE TO THE LAND ITSELF.
 4. USERS OF THIS PLAT SHOULD OBTAIN A CURRENT LEGAL TITLE OPINION TO OWNERSHIP TO THE BOUNDARIES.
 5. ALL DISTANCES SHOWN HEREON ARE HORIZONTAL GROUND DISTANCES.
 6. ALL INFORMATION ON OUTSIDE BOUNDARY (HEAVY DASHED LINES), WAS TAKEN FROM SURVEYS BY, L.J. QUESENBERRY, JOB #3347, DATED JULY 14, 2005, AND JOB #3347A, DATED APRIL 21, 2006.

TOTAL AREA = 114.702 ACRES



PC 2, SLIDE 2061-PG 1



DALTON-WALKER ASSOCIATES, P.C.
SURVEYORS
117 N. MAIN STREET
GALAX, VA 24333
(276) 236-0632
(276) 236-0596 fax

Job Number
CO90611
Date
6/25/09

Crew: DEW
Drawn: JAS
Checked: *JAS*
Scale: 1" = 200'

SHEET 1 OF 2

SUBDIVISION OF
CREEKWOOD
SULPHUR SPRINGS MAGISTERIAL DISTRICT
CARROLL COUNTY, VIRGINIA